

LET'S MOVE THE WORLD

NICKEL CHROME
PLATED BARS

The logo for CMC Italia srl features the letters 'CMC' in a bold, sans-serif font. A horizontal line is positioned above the 'C' and 'M', with a small circle centered above the 'C'. Below the 'C' and 'M', the text 'Italia srl' is written in a smaller, lowercase font.

CMC Italia srl



4.

NICKEL CHROME PLATED BARS

C.M.C. ITALIA works alongside its customers, constantly deepening its knowledge of raw materials and fields of application.

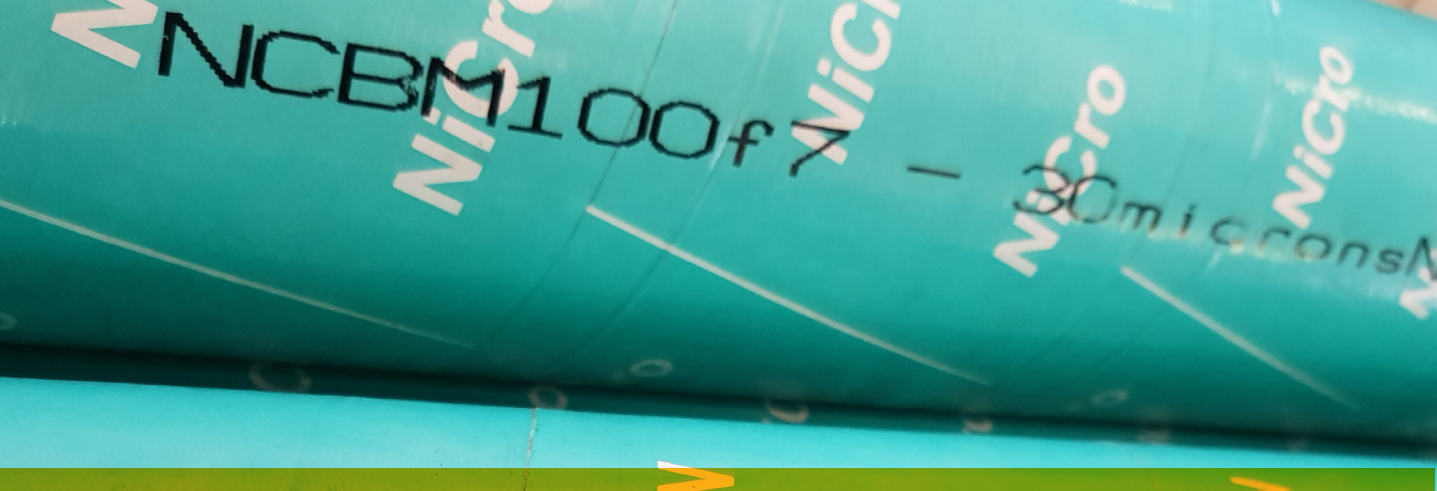
To meet the needs of the marine and mining industries, and for all those hydraulic applications

where prolonged exposure to highly corrosive agents occurs, C.M.C. ITALIA distributes **corrosion resistant nickel-chrome bars**.

The nickel surface layer, combined with chrome plating, provides outstanding **resistance to aggressive reagents**.

Standard dimensions:
from Ø20 to Ø160 mm
Quality of steel: 20MnV6
Tolerance: ISO f7
Nickel layer thickness: min. 30 µm
Chrome layer thickness: min. 20 µm

Nickel hardness: min.300 HV micro
Chrome hardness: min.900 HV micro
Roundness: max1/2 toll.
Surface roughness: Ra max0,20 µm
Straightness: max0.2 mm/m



Nickel chrome plated bar guarantees rating 10 with 1500h corrosion resistance in neutral salt spray (ISO 9227 NSS) and 500h corrosion in acetic acid salt spray (ISO 9227 AASS).

20MnV6 steel grade offers good weldability, enhanced mechanical characteristics, impact resistance at lower temperatures (-20°C).

CHEMICAL ANALYSIS

STEEL	C%	NI%	Cr%	S%	Si%	Mn%	P%	Mo%
20MnV6	0,16-0,22	-	-	0,035	0,10-0,40	1,30-1,70	0,035	max0,08

MECHANICAL PROPERTIES

DIMENSION (mm)	TENSILE STRENGTH Rm N/mm ²	YIELD POINT Rp0.2 N/mm ²	ELONGATION % min	RESILIENCE KV, J
6 < Ø ≤ 25	Min. 700	Min. 620	10	min. 27J / - 20°C
19 < Ø ≤ 80	Min. 600	Min. 460	10	min. 27J / - 20°C
80 < Ø ≤ 200	Min. 550	Min. 420	18	min. 27J / - 20°C

MACHINING

C.M.C. ITALIA can provide shafts and tubes machined according to clients' specific requirements.

Some of our processes: axial holes, radial holes, turning, etc.

All the processes are supervised by skilled and specialised operators, able to respect your needs.

CUT FIX LENGTH

C.M.C. ITALIA is able to offer a fast cutting service, thanks to high technology bandsaws, everyone with numerical control. Thanks to the passion and skills of the staff, C.M.C. ITALIA improved his reputation all over the world.

A team, you can trust in, will find the best solution to any requirements.

SOME EXAMPLES

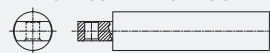
CROSSWISE GROOVE



OUTSIDE DIAMETER THREAD



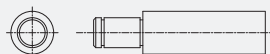
END FOR MOUNT WITH CLEVIS CLAMP



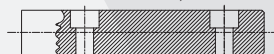
TAPPED OR DRILLED HOLES RADIALLY THROUGH SHAFT



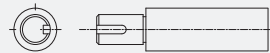
GROOVES FOR SNAP RING



RADIAL DRILLING HOLES, BORED



REDUCED DIAMETER WHIT/WITHOUT FEATHER KEYWAY



REDUCED DIAMETER WITH THREADED END



AXIAL DRILLED AND THREADED TO ENDS



D - CUT SHAPE



WWW.CMCITALIA.BIZ

Tel. (+39) 039.6815240
Fax (+39) 039.6815236
E-mail: info@cmcitalia.biz

VIMERCATE

Cascina San Paolino, 2
(Via S.M. Molgora)
20871 Vimercate (MB)

BURAGO

Via Ampere, 4
20875 Burago di Molgora (MB)

